



Australian Government  
Department of Home Affairs



Australian  
**BORDER FORCE**

# Immigration Detention and Community Statistics Summary

29 February 2020

# Table of Contents

About this report.....	3
Enquiries.....	3
Acronyms.....	3
Immigration Detention And Community Statistics Summary.....	4
In Community under Residence Determination Population By State/Territory.....	5
Immigration Detention Population.....	6
From 1990 to Current.....	6
People In Immigration Detention Facilities.....	7
Arrival Type.....	7
People In Immigration Detention.....	7
Nationality.....	8
Children In Immigration Detention.....	9
Time In Immigration Detention Facilities.....	11
Time In Community Under Residence Determination.....	12

## About this report

This report provides an overview of the number of people in immigration detention and Regional Processing Centres as at midnight on the date of the report. The report is produced on a monthly basis.

Data is sourced from several departmental processing and recording systems. Data relating to the immigration detention population is dynamic and there can be delays in transmission of information from the Department's immigration detention network operations. Variations in figures between this report and previous issues can occur. Due to these issues, data from the current financial year should always be considered provisional.

Further information about immigration detention is available at:

<https://www.homeaffairs.gov.au/research-and-statistics/statistics/visa-statistics/live/immigration-detention>

## Enquiries

Comments or enquiries concerning this report should be sent using the Department's client service feedback form quoting the name and date of the report.

See: <https://immi.homeaffairs.gov.au/help-support/contact-us>

## Acronyms

**Table 1 – Acronyms used in this document**

Acronym	Description
APOD	Alternative Place of Detention
IMA	Illegal Maritime Arrival
IDC/F	Immigration Detention Centre/Facility
IRH	Immigration Residential Housing
ITA	Immigration Transit Accommodation
RPC	Regional Processing Centre
S501	Section 501 of the <i>Migration Act 1958</i> (the Migration Act)
S501 Visa Cancellation	Visa cancellations based on character or related grounds

# Immigration Detention And Community Statistics Summary

At 29 February 2020, there were 1440 people in immigration detention facilities, including 1436 in immigration detention on the mainland and less than 5 in immigration detention on Christmas Island.

A further 846 people were living in the community after being approved for a residence determination and 12,873 IMAs were living in the community after grant of a Bridging Visa E.

The table below reflects figures based on records in Department of Home Affairs systems.

**Table 2 – People in Immigration Detention Facilities (IDFs), Alternative Places of Detention (APODs), Regional Processing Centres (RPCs) and the Community at 29 February 2020**

Place of immigration detention	Men	Women	Children	Total	Change from Previous Summary 31/01/20
Perth IDC	16	11	0	27	0
Villawood IDC	406	30	0	436	- 36
Yongah Hill IDC	378	0	0	378	+ 19
Christmas Island APODs	<5	<5	<5	<5	0
Mainland APODs	9	6	<5	18	+ 16
<b>Total IDCs/APODs</b>	<b>810</b>	<b>48</b>	<b>5</b>	<b>863</b>	<b>- 1</b>
Adelaide ITA	29	0	0	29	+ 4
Brisbane ITA	204	<5	0	207	- 4
Melbourne ITA	320	21	0	341	+ 9
<b>Total in IRH and ITA</b>	<b>553</b>	<b>24</b>	<b>0</b>	<b>577</b>	<b>+ 9</b>
<b>Total in IDC/F</b>	<b>1,363</b>	<b>72</b>	<b>5</b>	<b>1,440</b>	<b>+ 8</b>
<b>Total in Community under Residence Determination</b>	<b>301</b>	<b>261</b>	<b>284</b>	<b>846</b>	<b>- 6</b>
<b>Total IMAs in Community on Bridging Visa E (Including people in a re-grant process)</b>	<b>9,322</b>	<b>1,539</b>	<b>2,012</b>	<b>12,873</b>	<b>- 109</b>
<b>Total RPCs</b>	<b>0</b>	<b>0</b>	<b>0</b>	<b>0</b>	<b>0</b>
<b>Detention Group</b>					
S501 Visa Cancellation	590	28	0	618	- 11
Illegal Maritime Arrival	504	14	<5	520	+ 14
Other	269	30	<5	302	+ 5
<b>Total</b>	<b>1,363</b>	<b>72</b>	<b>5</b>	<b>1,440</b>	<b>+ 8</b>

# In Community under Residence Determination Population By State/Territory

Of the 846 people approved for a residence determination to live in the community, 35.6 per cent were in Queensland, 31.7 per cent in Victoria, 19.4 per cent in New South Wales, 9.7 per cent in South Australia, 3.7 per cent in Western Australia.

**Table 3 – People in the Community under Residence Determination by State/Territory at 29 February 2020**

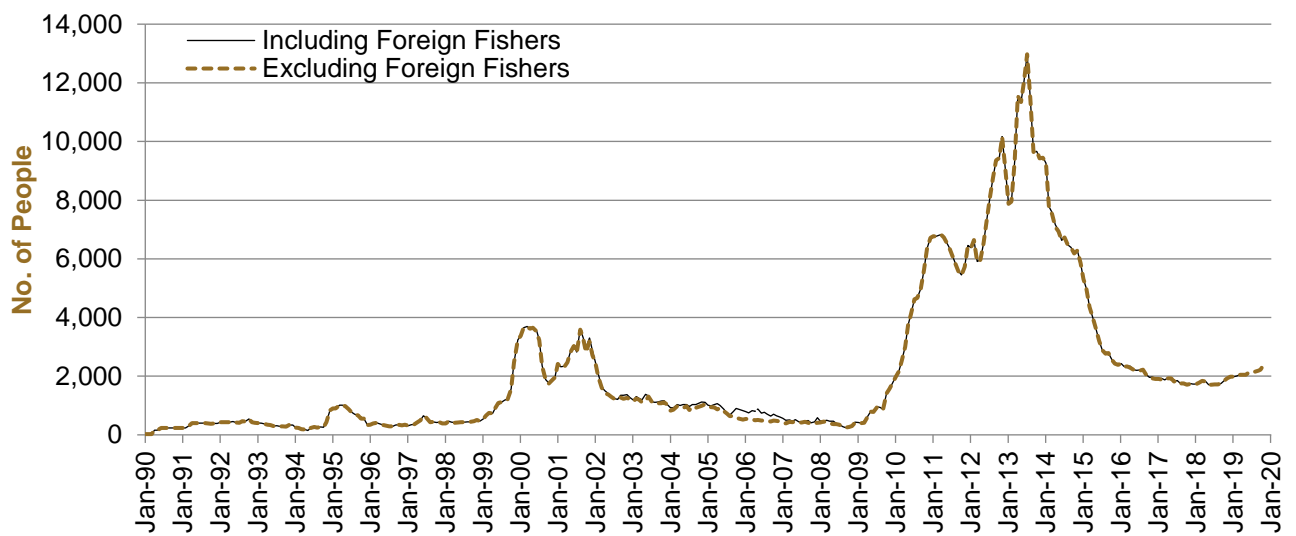
State/Territory	Adult Male	Adult Female	Child Male (<18 years)	Child Female (<18 years)	Total
Queensland	113	88	53	47	<b>301</b>
Victoria	92	79	56	41	<b>268</b>
New South Wales	56	63	26	19	<b>164</b>
South Australia	26	23	15	18	<b>82</b>
Western Australia	14	8	<5	5	<b>31</b>
<b>Total</b>	<b>301</b>	<b>261</b>	<b>154</b>	<b>130</b>	<b>846</b>

# Immigration Detention Population

## From January 1990 to Current

The overall number of people in immigration detention including in the community under residence determination has increased by 282 to 2286 compared with 2004 at the end of February 2019. This number takes into account releases of detainees into the community under residence determination and detainees who were held in immigration detention facilities as at 29 February 2020.

**Figure 1 – Population in Immigration Detention**



**Figure 2** above, shows the number of people in immigration detention from 1990 to the date of this report.

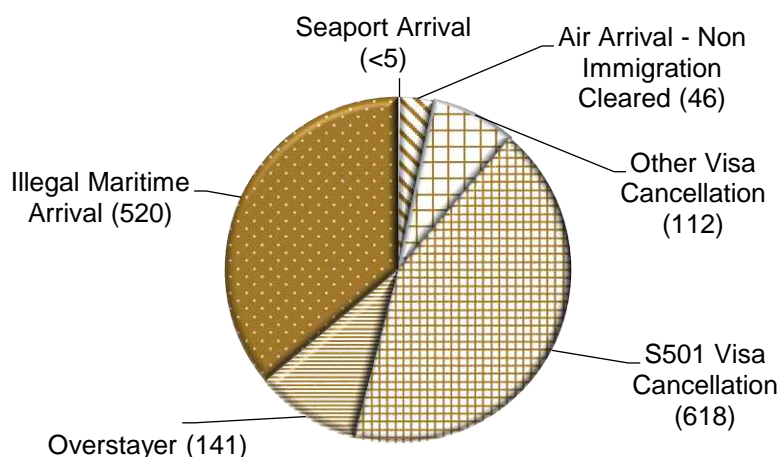
# People In Immigration Detention Facilities

## Arrival Type

There were 569 people who arrived unlawfully by air or boat, in held immigration detention facilities at 29 February 2020 representing 39.5 per cent of the total immigration detention population.

There were also 871 people (60.5 per cent of the total immigration population) who were taken into immigration detention for either overstaying or having their visas cancelled for breaching visa conditions.

**Figure 2 – People in Held Immigration Detention Facilities by Detention Group**



**Figure 2** above, shows the number of people in held immigration detention facilities by detention group, including Overstayers, S501 and Other Visa Cancellations, Illegal Maritime Arrivals, Unauthorised Air Arrivals, and if applicable – Inadequately Documented Crew Members and Others such as stowaways and ship deserters.

**Table 4 – People in Held Immigration Detention Facilities by Detention Group at 29 February 2020**

Place of immigration detention	S501 Visa Cancellation	IMA	Other Detention Group	Total	Change from Previous Summary 31/01/20
Perth IDC	11	7	9	<b>27</b>	0
Villawood IDC	249	82	105	<b>436</b>	- 36
Yongah Hill IDC	218	91	69	<b>378</b>	+ 19
Christmas Island APODs	0	<5	0	<b>&lt;5</b>	0
Mainland APODs	0	14	<5	<b>18</b>	+ 16
<b>Total IDCs/APODs</b>	<b>478</b>	<b>198</b>	<b>187</b>	<b>863</b>	<b>- 1</b>
Adelaide ITA	5	12	12	<b>29</b>	+ 4
Brisbane ITA	45	135	27	<b>207</b>	- 4
Melbourne ITA	90	175	76	<b>341</b>	+ 9
<b>Total in IRH and ITA</b>	<b>140</b>	<b>322</b>	<b>115</b>	<b>577</b>	<b>+ 9</b>
<b>Total in IDC/F</b>	<b>618</b>	<b>520</b>	<b>302</b>	<b>1,440</b>	<b>+ 8</b>

# People In Immigration Detention

## Nationality

At 29 February 2020, there were 1440 people in held immigration detention facilities. Of these 1440 people, 15.3 per cent were from Iran, 10.8 per cent were from New Zealand, 6.4 per cent were from Sudan, 5.8 per cent were from Sri Lanka and 5.2 per cent were from Iraq.

**Table 5 – People in Held Immigration Detention Facilities by Nationality at 29 February 2020**

Nationalities	Adult Male	Adult Female	Child Male (<18 years)	Child Female (<18 years)	Total
Iran	210	11	0	0	<b>221</b>
New Zealand	141	14	0	0	<b>155</b>
Sudan	89	<5	0	0	<b>92</b>
Sri Lanka	75	6	0	<5	<b>83</b>
Iraq	75	0	0	0	<b>75</b>
Vietnam	63	7	0	0	<b>70</b>
United Kingdom	62	5	0	0	<b>67</b>
Afghanistan	56	0	0	0	<b>56</b>
India	54	<5	0	0	<b>55</b>
Stateless	45	0	0	0	<b>45</b>
Other	493	25	<5	<5	<b>521</b>
<b>Total</b>	<b>1,363</b>	<b>72</b>	<b>&lt;5</b>	<b>&lt;5</b>	<b>1,440</b>

At 29 February 2020, 846 were people living in the community after being approved for a residence determination. Of these 846 people, 51.2 per cent were from Iran, 12.6 per cent were from Stateless, 10.9 per cent were from Sri Lanka, 8.3 per cent were from Somalia and 3.4 per cent were from Iraq.

**Table 6 – People in the Community under Residence Determination by Nationality at 29 February 2020**

Nationalities	Adult Male	Adult Female	Child Male (<18 years)	Child Female (<18 years)	Total
Iran	145	150	76	62	<b>433</b>
Stateless	39	29	16	23	<b>107</b>
Sri Lanka	33	21	20	18	<b>92</b>
Somalia	20	28	13	9	<b>70</b>
Iraq	20	<5	<5	<5	<b>29</b>
Other	44	29	26	16	<b>115</b>
<b>Total</b>	<b>301</b>	<b>261</b>	<b>154</b>	<b>130</b>	<b>846</b>



# Children In Immigration Detention

At 29 February 2020 there were 5 children (aged less than 18 years) in Immigration Residential Housing, Immigration Transit Accommodation and Alternative Places of Detention.

**Figure 3 – Children in Immigration Residential Housing, Immigration Transit Accommodation and Alternative Places of Detention**

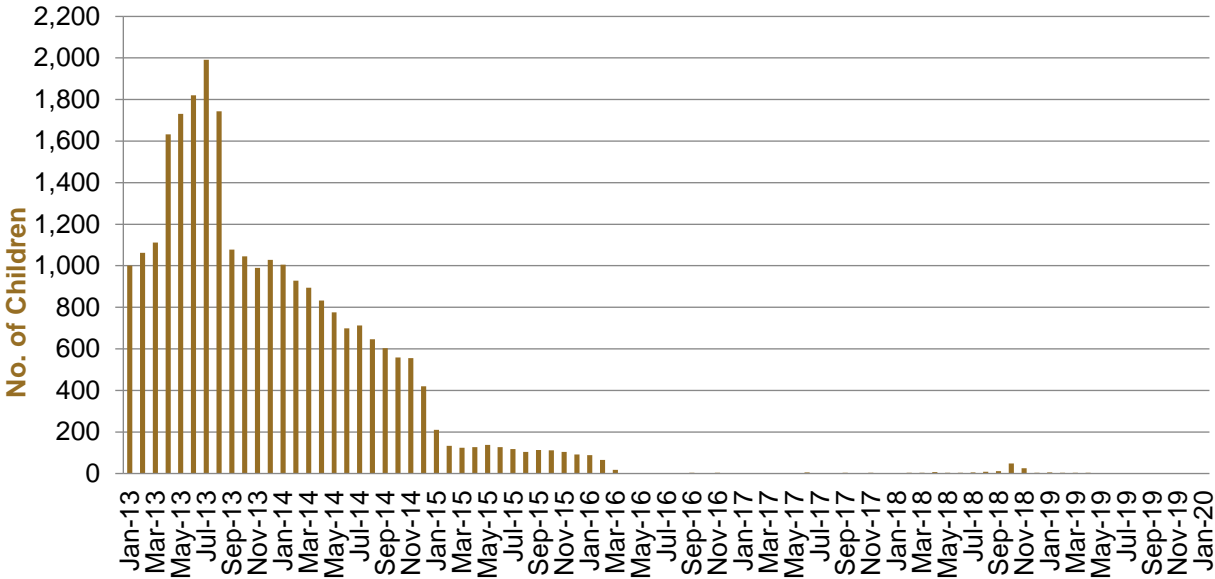


Figure 3 above, shows the number of children in Immigration Detention Facilities and Alternative Places of Detention from January 2013 to the date of this report. The continuous increase in the number of children in detention facilities from April 2013 to August 2013 was due to a rapid increase in illegal maritime arrivals during this period. The number of children in immigration detention facilities decreased in September 2013, as children completed mandatory processing and were transferred into the community. The number of children in detention facilities continued to decline during the late 2013 and 2014, with further reduction in January 2015. The increase in the number of children in alternative places of detention from August 2018 was following transfers from Nauru to Australia (with family members).

At 29 February 2020, the number of children living in the community after being approved for a residence determination decreased by 5 to 284 from 289 in the previous report.

**Figure 4 – Children in the Community under Residence Determination**

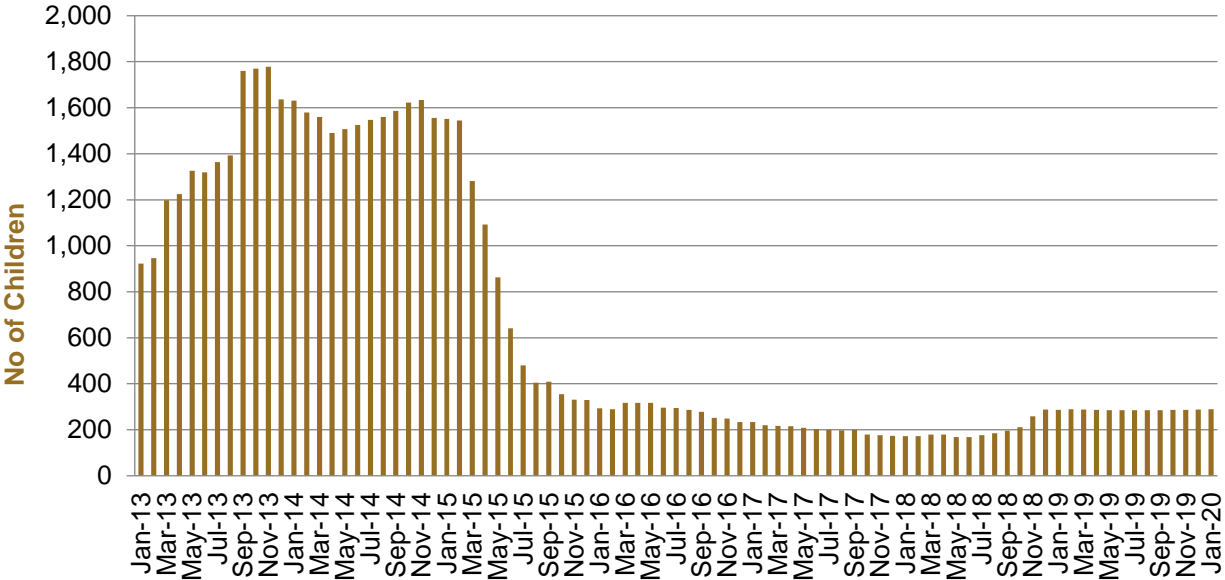


Figure 4 above, shows the number of children in the community under residence determination from January 2012 to the date of this report. The number of children in the community under residence determination, has levelled off at its lowest number since the peak in November 2013, as a result of releases into the community on Bridging E visas.

**Table 7 – Children in Immigration Detention and IMA Children in the Community on a Bridging E Visa at 29 February 2020**

Placement Type	Children
Immigration Residential Housing	0
Immigration Transit Accommodation	0
Alternative Places of Detention	5
<b>Total Facility</b>	<b>5</b>
<b>Total in the Community under a Residence Determination</b>	<b>284</b>
<b>Total IMAs in the Community on a Bridging E visa (including in re-grant process)</b>	<b>2,012</b>

# Time In Immigration Detention Facilities

At 29 February 2020, there were 1440 people in immigration detention facilities.

Of these 1440 people, 21.7 per cent had been detained for 91 days or less and 60 per cent had been detained for 365 days or less

**Table 8 – Length of Time of People in Held Immigration Detention Facilities at 29 February 2020**

Period Detained	Total	% of Total
7 days or less	71	4.9%
8 days - 31 days	88	6.1%
32 days - 91 days	153	10.6%
92 days - 182 days	256	17.8%
183 days - 365 days	296	20.6%
366 days - 547 days	125	8.7%
548 days - 730 days	117	8.1%
Greater than 730 days	334	23.2%
<b>Total</b>	<b>1,440</b>	<b>100%</b>

At 29 February 2020, the average period of time for people held in detention facilities was 513 days.

**Figure 5 – Average Number of Days of People in Held Immigration Detention Facilities only**

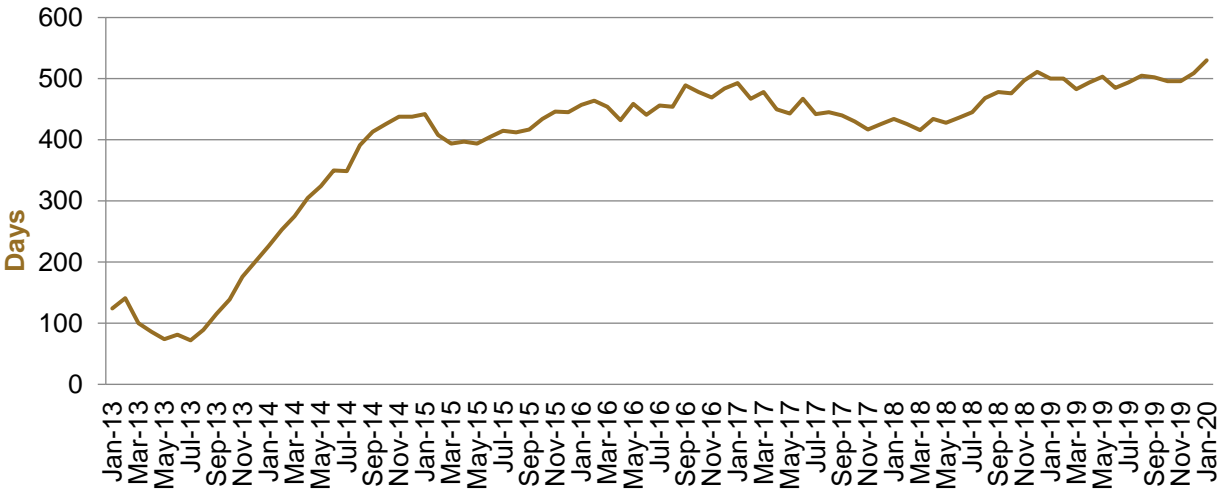


Figure 5 above, shows the average days in held immigration detention at the end of each month from January 2013 to the date of this report. The average period of time for people held in detention facilities steadily increased from July 2013 to January 2015. Since November 2018 the average number of days has remained around 500.

## Time In Community Under Residence Determination

Of the 846 people in the community under residence determination, as at 29 February 2020, 2.4 per cent had been in the community for 91 days or less and 17.6 per cent had been in the community for 365 days or less.

**Table 9 – Length of Time of People in Community under Residence Determination at 29 February 2020**

Period Detained	Total	% of Total
7 days or less	<5	0.2%
8 days - 31 days	6	0.7%
32 days - 91 days	12	1.4%
92 days - 182 days	33	3.9%
183 days - 365 days	96	11.3%
366 days - 547 days	307	36.3%
548 days - 730 days	70	8.3%
Greater than 730 days	320	37.8%
<b>Total</b>	<b>846</b>	<b>100%</b>